



Mental health profile

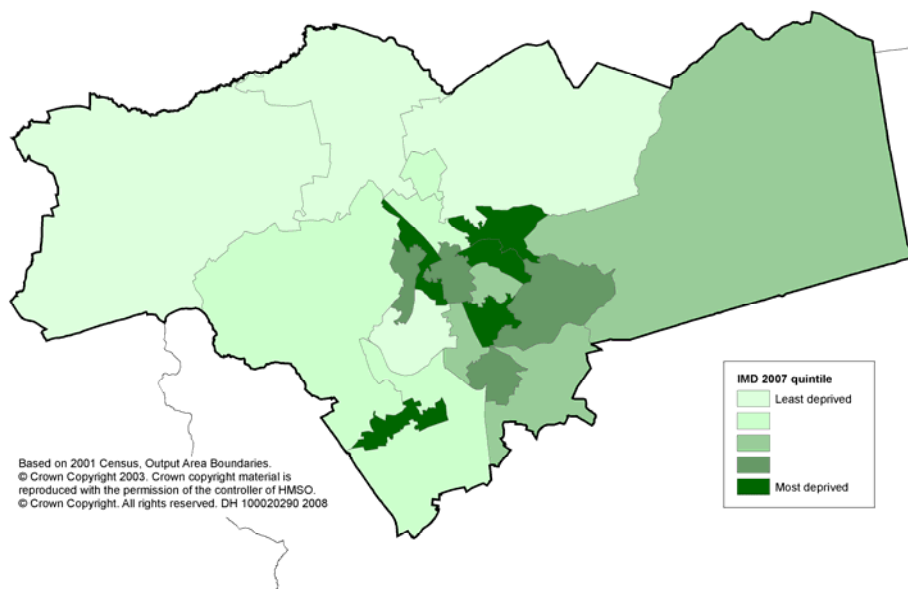
Peterborough PCT

Introduction

This profile gives an overview of the mental health of the adult population in this area. With other local information, it is designed to support the action being taken by the NHS, primary care trusts and local government, to improve mental health services by informing local commissioning plans for these services.

Mental health is a key national priority, and mental health services must promote equality, access, choice and independence, and address healthcare inequalities in the longer term; this can be achieved through service and performance improvement, and system change.

Figure 1. Map of deprivation across the PCT



Further information on mental health, along with electronic copies of this and other PCT profiles, is at URL http://www.erpho.org.uk/topics/Mental_Health

Authors: Christine Hill, Sarah Blundell and Philip Mills, erpho.
©2009 erpho. All rights reserved.

Mental health demographics

- Peterborough PCT has a population of 163,300.
- The ethnic composition is 87% White, 2% Mixed race, 8% Asian, 2% Black and 1% Chinese.
- The three most deprived wards are Central, Dogsthorpe and Ravensthorpe.
- There were 2530 claimants of incapacity benefits due to mental health conditions in 2006.
- There were 33 admissions for schizophrenia in 2005/6.
- There were an estimated 1035 persons aged 15-64 who were problem drug users in 2004/5.
- There were 2667 alcohol-related inpatient admissions in 2005.
- There are 191 persons on enhanced and standard care.
- Peterborough PCT spent £186 per head on mental health care in 2006/7.

Key messages (from Ref. 1)

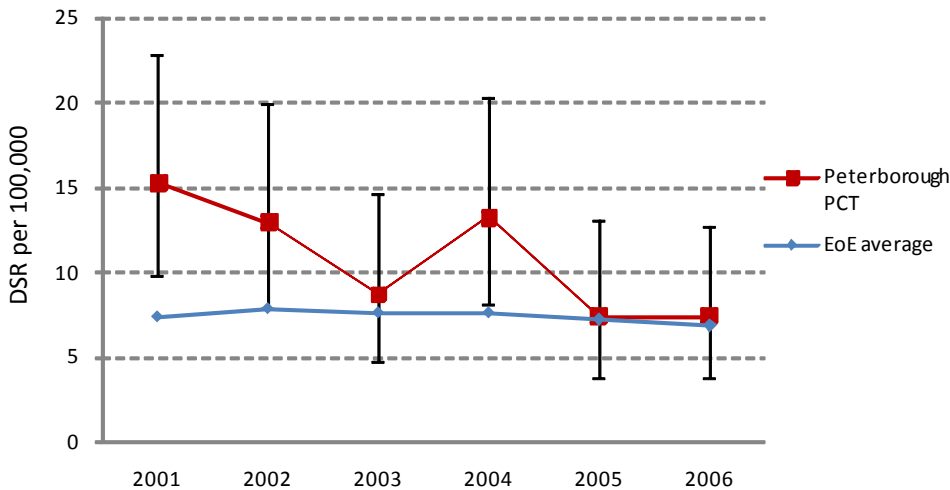
- There are strong links between social deprivation (see map, above) and mental ill health.
- Evidence supports the beneficial effects of employment on mental health by boosting people's confidence and psychological well-being. People who are unemployed are twice as likely to have depression as people in work.
- Children from poor households are three times more likely to have mental health problems.
- People who have been abused or who have been victims of domestic violence are more likely to suffer from mental health problems.
- People with drug and alcohol problems are more likely to have mental health problems.
- Between one quarter and one half of homeless people may have a serious mental disorder, as well as be alcohol dependent.
- Black and minority ethnic groups are diagnosed as having higher rates of mental health problems than the general population.
- There is a high rate of mental health problems in the prison population.

Suicide and injury undetermined

The chart below shows the directly standardised rate for mortality from suicide and injury undetermined of persons of all ages for this area, and for the region overall, from 2001 to 2006. The vertical lines represent the limits of the variation around the local rate that might occur due to chance (95% confidence interval). If the

regional average falls below the vertical bars, then the death rate in this area is higher than the regional rate. If the regional average falls above the vertical bars, then the death rate in this area is lower than the regional rate, and if the regional average crosses area between the vertical lines then the death rate in this area is the same as the regional rate.

Figure 2. Mortality from suicide and injury undetermined

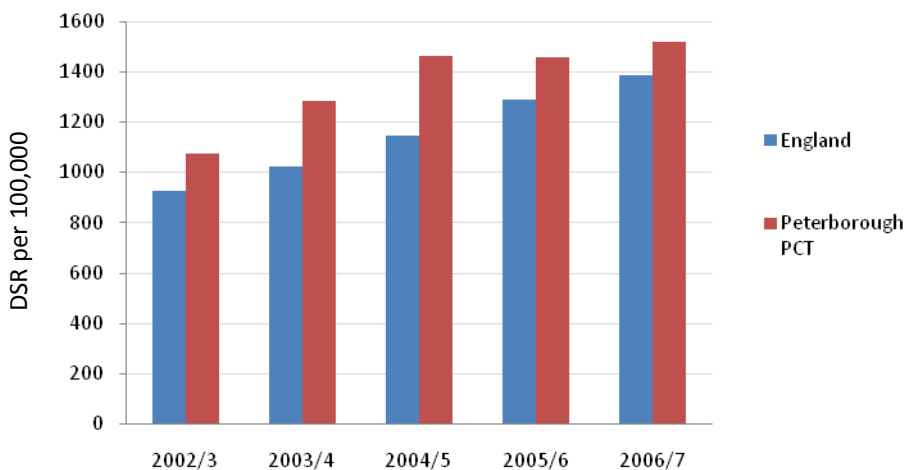


Alcohol-related harm

The chart below shows National Indicator 39, which provides the rate of hospital admissions for alcohol-related harm for every 100,000 members of the population (standardised using the European population), derived from Hospital Episode Statistics (HES) covering the period 2002/03 to 2006/07. The chart compares this PCT (red) with the England average (blue). Evidence suggests an association between increased alcohol consumption and mental ill

health. Alcohol consumption can be a cause of mental ill health, or a result of mental ill health. Less than 1% of the general population is classified as being moderately or severely dependent on alcohol; this increases to 2% in people with neurotic disorders, 5% among those with phobias, and 6% among those with two or more neurotic disorders. Alcohol dependence is often treated within mental health services (Ref. 2). Further information on alcohol use locally can be found in the Local Alcohol Profiles (Ref. 3).

Figure 3. Hospital admissions for alcohol-related harm



Summary of mental health in this area

The chart below shows how mental health in this PCT compares with the England average. For each indicator, the value for this PCT is shown as a circle, while the regional range is shown as a blue bar. Indicators are grouped by type. Key factors underpinning indicator selection were public

health priorities and outcomes, rather than measures of service provision; and data validity and reliability. Some of the indicators selected have limitations and these are discussed further on the mental health profiles topic page at http://www.erpho.org.uk/topics/Mental_Health

Figure 4. Mental health summary

Group	Indicator	Local value	Regional average	Regional lowest	Regional range around national average	Regional highest
Mental health needs	1 People living in most deprived areas (%)	23.2	6.2	0.45		23.20
	2 IMD score	24.5	15.3	10.1		25.0
	3 MH incapacity benefit claimants	24.7	20.0	15.2		30.0
Psychiatric morbidity	4 Estimated prevalence any neurotic disorder	169.2	169.7	149.7		206.5
	5 Estimated proportion with depression (%)	12.6	12.7	11.10		15.44
	6 Severe mental illness in primary care (%)	0.7	0.6	0.52		0.71
	7 Dementia register in primary care (%)	0.3	0.4	0.28		0.61
	8 Mortality from suicide and injury undetermined	9.8	7.6	5.73		9.78
	9 Hospital admissions for self harm	71.8	128.3	44.5		270.3
	10 Number of ADQs antidepressants prescribed	18535	21014	13300		30836
	11 Number of ADQs antipsychotics prescribed	1958	1637	1350		2584
	12 Number of ADQs hypnotics prescribed	6390	6037	4197		10497
Use of services	13 Hospital stays for neuroses	11.6	22.9	11.6		31.3
	14 Hospital stays for schizophrenia	20.3	40.7	20.3		65.3
	15 Persons on enhanced and standard care	120	578	74		1180
	16 Adults in contact with mental health services	1383	1482	1041		2373
	17 Crisis resolution home treatment caseload	44.1	234.2	0.27		1828.28
	18 Assertive outreach teams caseload	0.0	177.0	0.38		1043.91
	19 Early intervention caseload	0.0	35.4	0.19		217.82
	20 Estimated prevalence of drug misuse	9.9	6.5	4.31		15.70
	21 Hospital stays due to alcohol	1519	1156	832		1538
Race equality	22 Admission ratio among Black minority groups	0.0	0.0	0.00		0.14
	23 Admission ratio for all minority ethnic groups	0.0	0.1	0.01		0.44
Spend	24 Total spend on mental health per head	186	163	141		243

X Regional average ○ Local value ● PCT significantly lower than the England average ● PCT significantly higher than the England average

Indicator definitions

1. Level of deprivation of a population in an area, as measured by the percentage of people in that area living in the most deprived fifth of areas in England. 2. Measure of multiple deprivation for small geographical areas. IMD 2007 scores have been calculated for small geographical areas known as Super Output Areas covering the whole of England. 3. Working-age people who are in receipt of benefits for mental health conditions per 1000 people aged 16-64M, 16-59F. 4. Estimated prevalence of neurotic disorder per 1000 population aged 16-74. 5. Proportion of the population aged 16-64 predicted to have a common mental illness based on having a CIS-R (Clinical Interview Schedule, revised version) score of 12+. 6. The number of people registered with the GP with schizophrenia, bipolar disorder and other psychoses divided by the total practice list size for all practices within the PCT. 7. Number of persons with dementia on practice register per 100 total population. 8. Age-standardised mortality rate for suicide and injury undetermined per 100,000 total population. 9. Hospital admissions for self harm (primary diagnosis ICD-10 codes X60 - X84) per 100,000 population for the years 2003 and 2004. 10. Prescriptions of antidepressant drugs (BNF 4.3) in primary care, (2007/8) Number of ADQs of antidepressant drugs per 1000 total population. 11. Prescriptions of antipsychotics (BNF 4.2.1) in primary care, 2007/8. Number of ADQs of drugs used in psychoses and related disorders per 1000 total

population. 12. Prescriptions of anxiolytics and hypnotic drugs (BNF 4.1.2 and 4.1.1) in primary care, (2007/8). Number of ADQs of hypnotics and anxiolytics per 1000 total population. 13. Directly standardised rate of total number of neuroses admissions per 100,000 of the resident PCT population 2005/6. 14. Directly standardised rate of total number of schizophrenia admissions per 100,000 of the resident PCT population 2005/6. 15. Directly standardised rate of total number of persons on standard and/or enhanced Care Programme Approach per 100,000 of the resident PCT population 2005/6. 16. Directly standardised rate of total number persons with open mental health spells per 100,000 of the resident PCT population 2005/6. 17. Directly standardised rate of total number of CRHT contacts per 100,000 of the resident PCT population 2005/6. 18. Directly standardised rate of total number of Assertive outreach contacts per 100,000 of the resident PCT population 2005/6. 19. Directly standardised rate of total number of Early intervention caseload contacts per 100,000 of the resident PCT population 2005/6. 20. Estimated prevalence of Problematic Drug Users 2004/5. 21. Directly standardised rate of total number of alcohol-attributable admissions per 100,000 of the resident PCT population (National Indicator 39) 2005/6. 22. Admission to mental health services 2005/6: ratio of Black minority group adults to all White adults. 23. Admission to mental health services 2005/6: ratio of all ethnic group adults to all White adults. 24. Total spend on mental health per head 2006/7.

Regional overview

The chart below gives an overview of how each PCT compares with the England average for all the indicators used in this profile. As with the mental

health summary (Figure 4), indicators are grouped according to type.

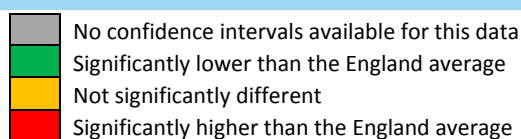


Figure 5. Tartan rug

Group	Indicator	Bedfordshire	Cambridgeshire	E & N Hertfordshire	Gt Yar & Waveney	Luton	Mid Essex	Norfolk	North East Essex	Peterborough	South East Essex	South West Essex	Suffolk	West Essex	West Hertfordshire
Mental health needs	1 People living in most deprived areas (%)	Green	Green	Green	Red	Red	Green	Green	Green	Red	Green	Green	Green	Green	Green
	2 IMD score	Grey	Grey	Grey	Grey	Grey	Grey	Grey	Grey	Grey	Grey	Grey	Grey	Grey	Grey
	3 MH incapacity benefit claimants	Green	Green	Green	Red	Green	Green	Green	Green	Green	Green	Green	Green	Green	Green
Psychiatric morbidity	4 Estimated prevalence any neurotic disorder	Green	Green	Red	Red	Red	Green	Green	Green	Red	Red	Red	Green	Red	Red
	5 Estimated proportion with depression (%)	Green	Green	Green	Green	Red	Green	Green	Green	Green	Green	Green	Green	Green	Green
	6 Severe mental illness in primary care (%)	Green	Green	Green	Yellow	Yellow	Green	Yellow	Yellow	Yellow	Green	Green	Green	Green	Green
	7 Dementia register in primary care (%)	Green	Green	Green	Red	Green	Green	Red	Yellow	Green	Red	Green	Red	Yellow	Green
	8 Mortality from suicide and injury undetermined	Yellow	Yellow	Green	Yellow	Yellow	Yellow	Yellow	Yellow	Yellow	Yellow	Yellow	Yellow	Yellow	Yellow
	9 Hospital admissions for self harm	Red	Green	Green	Green	Green	Green	Green	Green	Green	Green	Yellow	Green	Green	Yellow
	10 Number of ADQs antidepressants prescribed	Grey	Grey	Grey	Grey	Grey	Grey	Grey	Grey	Grey	Grey	Grey	Grey	Grey	Grey
	11 Number of ADQs antipsychotics prescribed	Grey	Grey	Grey	Grey	Grey	Grey	Grey	Grey	Grey	Grey	Grey	Grey	Grey	Grey
	12 Number of ADQs hypnotics prescribed	Grey	Grey	Grey	Grey	Grey	Grey	Grey	Grey	Grey	Grey	Grey	Grey	Grey	Grey
	Use of services	13 Hospital stays for neuroses	Green	Yellow	Green	Yellow	Green	Yellow	Yellow	Yellow	Green	Yellow	Green	Yellow	Yellow
14 Hospital stays for schizophrenia		Green	Yellow	Green	Green	Green	Green	Green	Green	Green	Yellow	Green	Yellow	Green	Green
15 Persons on enhanced and standard care		Red	Green	Red	Red	Red	Red	Green	Red	Red	Red	Red	Green	Red	Red
16 Adults in contact with mental health services		Green	Green	Green	Green	Red	Red	Red	Red	Red	Red	Red	Red	Red	Red
17 Crisis resolution home treatment caseload		Green	Green	Green	Green	Green	Green	Green	Green	Green	Green	Green	Green	Green	Green
18 Assertive outreach teams caseload		Green	Green	Green	Green	Red	Red	Red	Red	Red	Red	Red	Red	Red	Red
19 Early intervention caseload		Green	Green	Green	Green	Red	Red	Green	Red	Green	Red	Yellow	Green	Red	Green
20 Estimated prevalence of drug misuse		Green	Green	Green	Green	Red	Green	Green	Green	Yellow	Green	Green	Green	Green	Green
21 Hospital stays due to alcohol	Green	Red	Green	Yellow	Red	Green	Green	Green	Red	Green	Green	Green	Green	Green	
Race equality	22 Admission ratio among Black minority groups	Grey	Grey	Grey	Grey	Grey	Grey	Grey	Grey	Grey	Grey	Grey	Grey	Grey	Grey
	23 Admission ratio for all minority ethnic groups	Grey	Grey	Grey	Grey	Grey	Grey	Grey	Grey	Grey	Grey	Grey	Grey	Grey	Grey
Spend	24 Total spend on mental health per head	Grey	Grey	Grey	Grey	Grey	Grey	Grey	Grey	Grey	Grey	Grey	Grey	Grey	Grey

Notes

This profile is intended to give an overview of mental health outcomes within a PCT, and draws together key data relating to mental health. Inevitably, there are gaps in our data and important public health issues have had to be omitted due to a lack of reliable data. It is hoped that these gaps can be rectified in the future.

These profiles draw to a great extent on the APHO report on mental health (Ref. 2). The authors wish to acknowledge this contribution.

For any queries or feedback on these profiles please contact: comms@rdd-phru.cam.ac.uk

References

1. Department of Health. National service framework for mental health: modern standards and service models. 1999. <http://tinyurl.com/3372ml>
2. APHO Indications of Public Health in the English Regions 7: Mental Health <http://tinyurl.com/col2p4>
3. Local alcohol profiles for England. <http://www.nwph.net/alcohol/lape/>

Further resources

- APHO Health Profiles <http://tinyurl.com/6j8ram>
 National Suicide Prevention Strategy for England <http://tinyurl.com/6fhsc2>